

SUBLIMATE

Eco



Special features

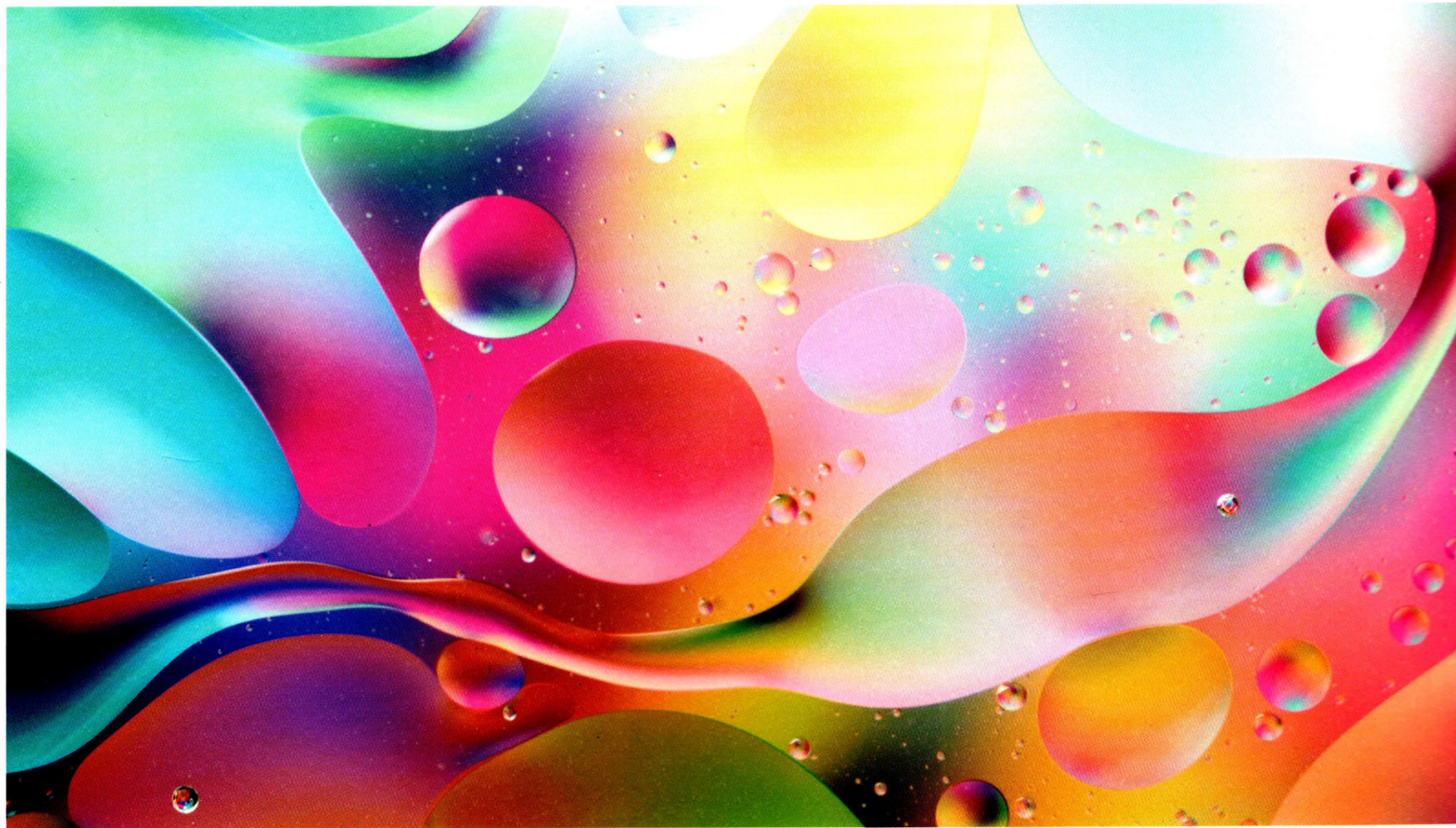
- Ultra-light grammage
- Fast dry speed
- Cost optimization

Typical applications

- Fashion

Five-point scale

- Ink coverage
- Transfer yield
- Dry speed



Product range

Physical properties		Unit	50 gsm	Test method
	Basis weight	g/m ²	50 ± 2	KS M ISO 536
	Thickness	µm	70 ± 3	KS M ISO 534
	Moisture	%	5.0 ± 1.0	TAPPI T 412
	Smoothness	Sec	20 ▲	KS M ISO 5627
	Brightness	%	85 ▲	ASTM E313
Transfer ratio (textile)	Yellow	O.D	1.40 ▲	Temperature: 200 °C Pressure: 20 psi Time: 30 sec
	Magenta		1.90 ▲	
	Cyan		1.80 ▲	
	Black		2.15 ▲	

* All Hansol products are sold with the understanding that each purchaser will independently determine the suitability of any product for the purchaser's intended application